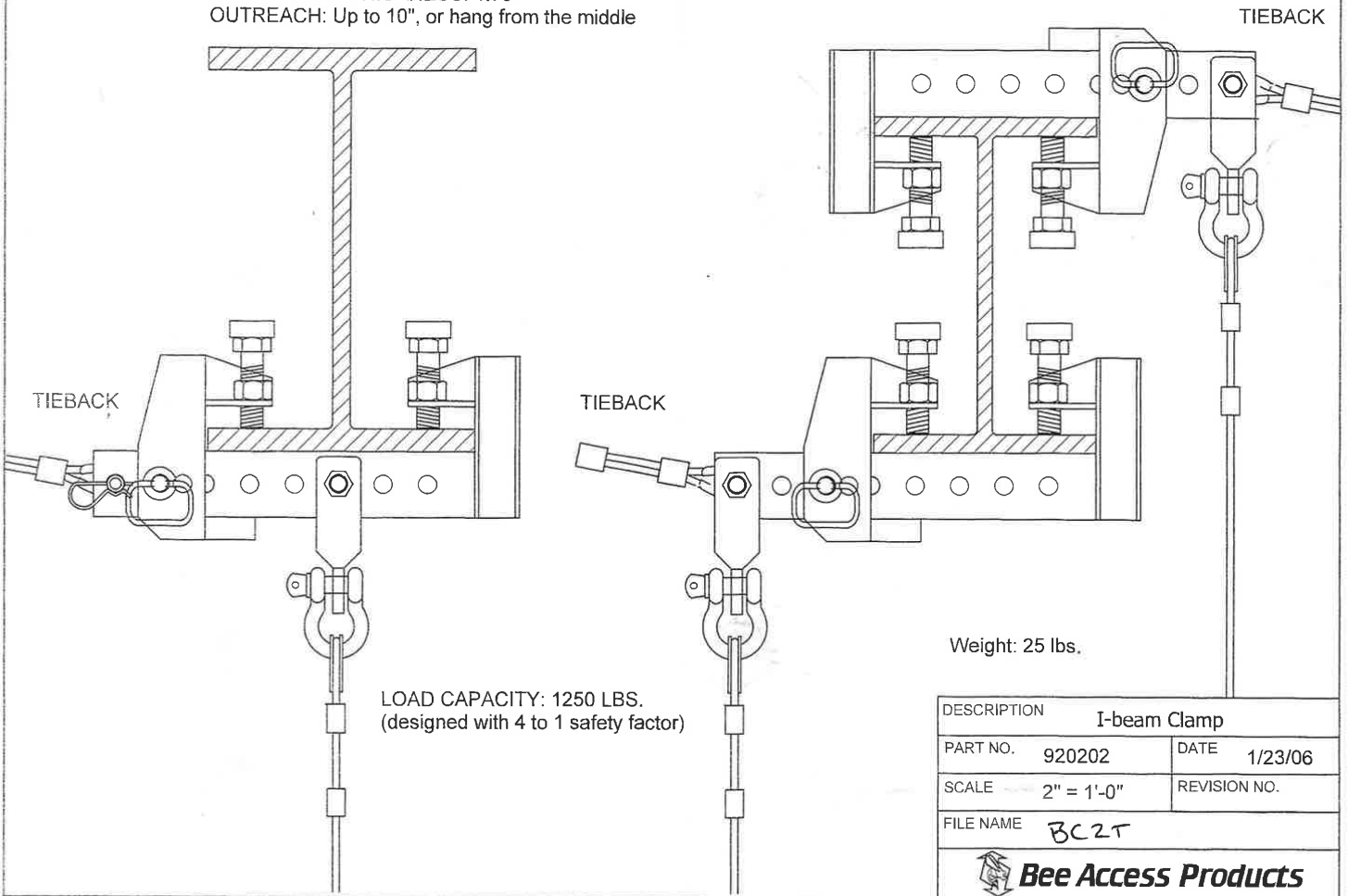



FOR USE ON FLANGES FROM 6 to 14"
 MAX. FLANGE THICKNESS: 1.75"
 OUTREACH: Up to 10", or hang from the middle



DESCRIPTION		I-beam Clamp	
PART NO.	920202	DATE	1/23/06
SCALE	2" = 1'-0"	REVISION NO.	
FILE NAME	BC2T		
 Bee Access Products			