

SAFEWAZE

NEW

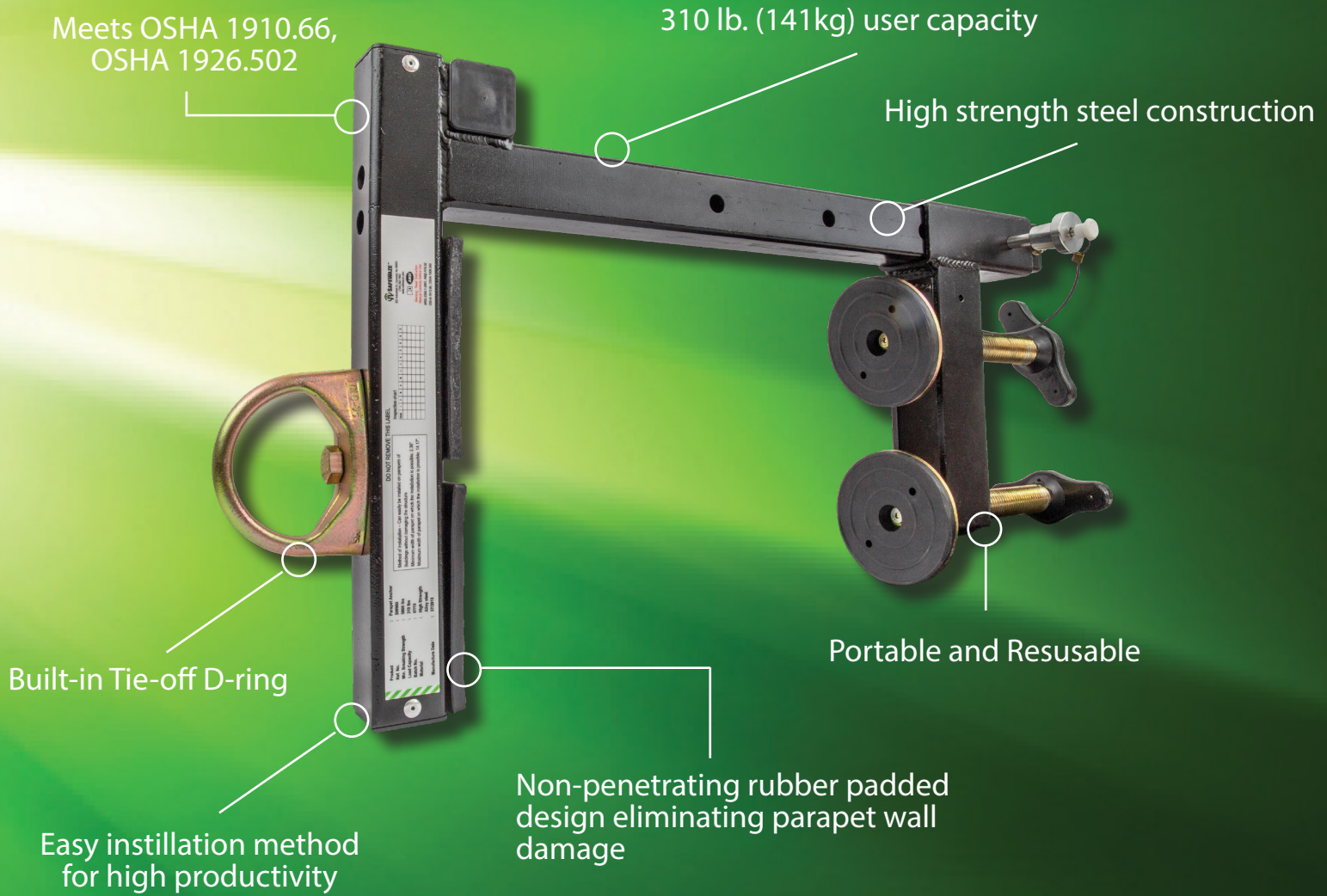
Parapet Anchor

Part # SW900

The SW900 **Parapet Wall Anchor** installs easily onto existing parapet walls with no need for any additional tools or penetration of the wall surface. Suitable anchor point connection for work positioning or descent off a building roof or as the anchor point in your personal fall arrest system.

Features:

- Accommodates concrete parapets 2.36" (6cm) to 14.17" (36cm)
- Minimum parapet height installation of 8.6" (22cm)
- 2 tightening handles for even force distribution on the parapet wall
- Main body is composed of Alloy Steel



Fall Arrest Systems • Confined Space • Engineering • Rescue Systems
SAFEWAZE.COM • Phone: 704-262-7893 • Fax: 704-262-9051



safewaze.com | (P) 704-262-7893 | (F) 704-262-9051
322 Industrial Court, Concord, NC 28025

TECHNICAL DATA SHEET

SW900 Parapet Wall Anchor



Description	Designed for situations in which a typically flat roof with no existing anchorage points is surrounded by a parapet wall. Anchor installs easily onto parapet wall with no drilling or additional tools required.
Min. / Max. Wall Thickness	2.36 in. (60 mm) to 14.1 in (360 mm) thick
Materials	Main Body: Alloy Steel Set Screws: Zinc Plated Steel Set Screw Handles: Plastic Main Body and Set Screw Cushions: Composite Rubber D-ring: Zinc Plated Steel Detent Retaining Pin: Stainless Steel w/ Plastic Handle
Minimum Tensile Strength	5,000 lbs - 22 kN
Weight	20 lbs (9.07 kg)
Overall Length	22 in (557.5 mm)
Overall Height	14 in (355 mm)
Weight Capacity	310 lbs (140.61 kg) - Single user
Applicable Standards	Meets OSHA 1926.502 - OSHA 1910.66

Parapet Wall Thickness:
 Minimum- 2.36 inch (60 mm) Maximum- 14.1 inch (360 mm)
Dimensions : 355 mm (h) x 577.5 mm (w)

12. TERMINOLOGY :

Authorized Person : A person assigned by the employer to perform duties at a location where the person will be exposed to a fall hazard (otherwise referred to as “user” for the purpose of these instructions).

Rescuer : Person or persons other than the rescue subject acting to perform an assisted rescue by operation of a rescue system.

Certified Anchorage : An anchorage for fall arrest, positioning, restraint, or rescue systems that a qualified person certifies to be capable of supporting the potential fall forces that could be encountered during a fall or that meet the criteria for a certified anchorage prescribed in this standard.

Qualified Person : A person with a recognized degree or professional certificate and with extensive knowledge, training, and experience in the fall protection and rescue field who is capable of designing, analyzing, evaluating and specifying fall protection and rescue systems to the extent required by this standard.

Competent Person : One who is capable of identifying existing and predictable hazards in the surroundings or working conditions which are unsanitary, hazardous, or dangerous to employees, and who has authorization to take prompt corrective measures to eliminate them.

13. LABEL AND MARKING :

	Product	Parapet Anchor	DO NOT REMOVE THIS LABEL	
	Ref. No.	SW900	Method of installation - Can easily be installed on parapets of buildings without damaging the structure. Remove width of parapet on which the installation is possible: 2.36" Maximum width of parapet on which the installation is possible: 14.1"	Inspection chart
	Min. Breaking Strength	5000 lbs		
	Load Capacity	310 lbs		
	Batch No.	XXXXXX		
Material	High Strength Alloy Steel	Warning - Read Instruction Manual Carefully Before Use ANSI Z359.1-2007 ANSI A32.02 CPSC 1915.55 CPSC 1505.50		
Manufacture Date	XX / 2018	Warning - Misuse or removal of this product or failure to follow instructions may result in serious injury or death. Avoid contact with any sharp edge or abrasive surface. Make any necessary repairs. For use on metal / concrete structures having maximum thickness of 13.4". Avoid contact with any sharp edge or abrasive surface. Avoid using on permanent stone structures. Concrete and electrical conduits are not to be used as attachment points for this product. Inspection - Product must be inspected by a qualified person before each use. A competent person must check & record at intervals of every 3 months. If the product is ever subjected to a force resulting from the amount of work it is used for, it must be immediately removed from service and destroyed or repaired by a competent person. ALWAYS FOLLOW THE INSTRUCTIONS FOR INSTALLATION AND USE.		

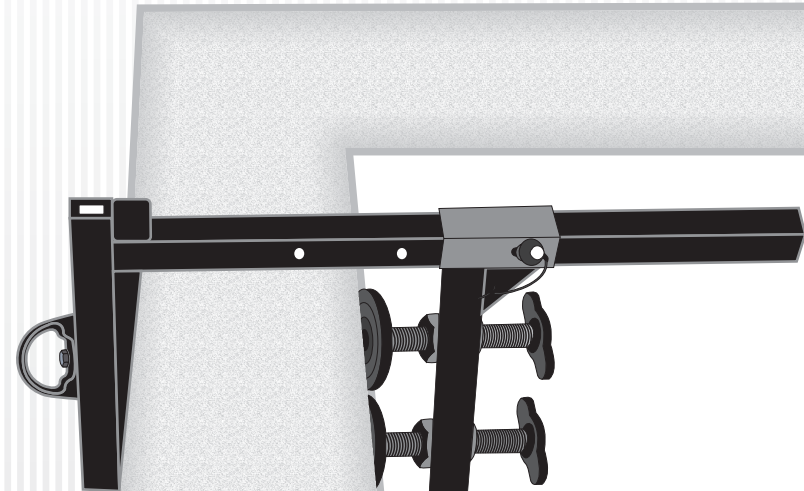
13. INSPECTION AND MAINTENANCE LOG :

SERIAL NUMBER:			
MODEL NUMBER:			
DATE OF PURCHASE:		DATE OF FIRST USE:	
INSPECTION DATE	INSPECTIONS ITEMS NOTED	CORRECTIVE ACTION	MAINTENANCE PERFORMED
Approved by:			
Approved by:			
Approved by:			
Approved by:			
Approved by:			
Approved by:			
Approved by:			
Approved by:			
Approved by:			



PARAPET ANCHOR SW900

INSTRUCTION MANUAL



Do not skip this instruction manual. Read the instruction manual carefully before using the equipment. Failure to do so may cause serious Injury or Death.

Safewaze

322 Industrial Court * Concord, NC 28025 Ph: 704-262-7893 * Fax: 704-262-9051 www.safewaze.com
 This manual must be read and understood in its entirety and used as part of fall protection training program as required by OSHA or any state regulatory agency. These instructions are intended to meet the manufacturer instructions as required by EN 795 : 2012, ANSI Z 359.1: 2007 and OSHA. The user must fully understand the proper equipment use and limitations.

These Instructions apply to the Parapet Anchor: SW900

- PURPOSE :** Safewaze's Parapet Anchor is a portable anchorage designed for fall arrest applications and is used in locations where a low parapet wall provides an anchor site. Do not hang, lift or support tools or equipment from this device.
- FALL ARREST :** In this application, the parapet wall anchor is used as part of a complete fall arrest system. Such systems typically include a full body harness, and must include either a shock absorbing lanyard or self-retracting lifeline.
- LIMITATIONS :** The following application limitations must be recognized and considered before using this connector system is intended to be installed on a parapet wall up to 14.1 inches (360mm) thick
 This anchorage connector system is designed for use by one person with a combined weight (person, clothing, tools, etc.) of no more than 310 lbs. (141 kg). Only one personal protective system may be connected to the anchorage connector.
 Personal fall arrest systems must be rigged in such a way as to limit the free fall to a maximum of 6 feet (1.8 m)

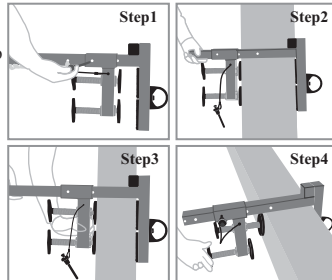
- ANCHORAGE STRENGTH :** Anchorages selected for personal fall arrest systems (PFAS) shall have a strength capable of sustaining static loads, applied in the directions permitted by the PFAS, of at least: (A) 3,600 lbs. (16 kN) when certification exists or (B) 5,000 lbs. (22.2 kN) in the absence of certification. When more than one PFAS is attached to an anchorage (i.e.-beam, etc.), the anchorage strengths set forth in (A) and (B) above shall be multiplied by the number of personal fall arrest systems attached to the anchorage.

5. INSTALLATION REQUIREMENTS :

- SUPERVISION :** It is recommended that this equipment is installed under the supervision of a qualified person as defined by OSHA.
 Structure to which the anchor is installed may be a maximum of 14.1 inches (360mm) thick and must meet strength requirements. The location must be safely accessible when connecting to or disconnecting from the anchor. Swing falls should not be permitted if injury could occur should the user fall. The location must be free of other equipment or moving parts. There must be adequate total fall clearance, and there must be a rescue means. The anchorage must allow the parapet wall anchor to hang in a vertical orientation. Do not install the parapet wall anchor on an incline, at an angle, or upside-down.

- INSTALLATION :** Parapet anchor is intended to be installed on a parapet wall up to 14.1 inches (360mm) thick.

- Step 1:** Unscrew the set screws so the points do not protrude into the anchor slot. Remove the detent pin and move the adjustable arm back far enough to allow the clamp to fit over the parapet wall.
- Step 2:** Make sure the top surface within the anchor slot is fully seated on the parapet wall.
- Step 3:** Slide the adjustable arm toward the parapet wall and reinsert the locking pin through the appropriate position setting holes.
- Step 4:** Tighten each set screw until it makes contact with the parapet wall. Hands tighten the screws until snug. Excessive torque can damage the parapet wall or the parapet wall anchor.



WARNING : Read and follow manufacturer's instructions for associated equipment (i.e. full body harness, shock absorbing lanyard, self-retracting lifeline, etc.) used in your personal fall arrest system.

7. CONNECTING TO THE PARAPET ANCHOR :

- The parapet wall anchor is an anchorage connector for a shock absorbing lanyard or a self-retracting lifeline. Contact Safewaze for information regarding other possible connecting subsystems.
- Make sure the connector (i.e. self-locking snap hook of lanyard) is fully engaged and locked onto the back D-ring (dorsal) of the body support.

- Make sure that the connections are compatible (size, shape, strength, etc.). If connecting a shock absorbing lanyard to the parapet wall anchor, follow the above instructions to connect one end of lanyard (shock absorber pack end) to body support and connect the other end to the parapet wall anchor making sure the self-locking snap hook is fully engaged and locked onto the D-ring.
- If using a self-retracting lifeline, it must be connected to the D-ring with a self-locking and self-closing Karabiner (attach the Karabiner to the anchorage location on Self retracting lifeline), the self-retracting lifeline must hang vertically. Then connect the lifeline end of the SRL to the body support (harness). Make sure the connector (i.e. self-locking snap hook, karabiner) is fully engaged and locked onto the anchorage connector, SRL and body support. Make sure connections are compatible (size, shape, strength, etc.).

WARNING : When attaching a self-retracting lifeline to a parapet wall anchor, make certain the SRL hangs vertically and freely (not at an angle).

If installing a horizontal lifeline, follow the manufacturer's instructions for installation and use provided with the horizontal lifeline system.

- TRAINING :** It is the responsibility of the user and the purchaser of this equipment to assure they are familiar with these instructions, trained in the correct care and use of, and are aware of the operating characteristics, application limits and the consequences of improper use of this equipment.

IMPORTANT : Training must be conducted without exposing the trainee to a fall hazard. Training should be repeated on a periodic basis.

9.0 INSPECTION :

- FREQUENCY :** Before each use, visually inspect the parapet anchor as per the below mentioned steps.

This equipment must be inspected by a competent person other than the user at least once in a year . Record the results of each formal inspection in the inspection log in section 13.

IMPORTANT :

- Extreme working conditions (harsh environments, prolong use, etc.) may require increasing the frequency of inspections.
- If this equipment has been subjected to forces resulting from the arrest of a fall, it must be immediately removed from service and destroyed or returned to Safewaze for possible repair.

9.2 INSPECTION STEPS :

- Step 1:** Inspect the parapet wall anchor for physical damage. Look carefully for any signs of cracks, dents or deformities in the metal.
- Step 2:** Inspect the parapet wall anchor for signs of excessive corrosion.
- Step 3:** Ensure that the working parts are free from excessive dirt, oil, or other build-up.
- Step 4:** Inspect the D-ring, fixed arm, and fasteners. The D-ring must be free of cracks, dents or deformities in the metal. The fixed arm and bolt holding the D-ring must be undamaged and the nut fastened tightly to the bolt.
- Step 5 :** Inspect the points of the set screws. The points must not be broken and must be sharp enough to bite into a mild parapet wall.
- Step 6 :** Inspect the detent pin to ensure that it inserts fully through the position setting holes of the arms.
- Step 7 :** Inspect labels, all labels should be present and fully legible. Labels must be replaced if illegible or missing.
- Step 8 :** Inspect each system component or subsystem as per the manufacturer's instructions.
- Step 9 :** Record the inspection date and results in the inspection log.

Note : If inspection reveals a defective condition, remove the unit from service immediately and destroy or contact a factory authorized service center for repair.

Only Safewaze or parties authorized in writing may make repairs to this equipment.

10. MAINTENANCE, SERVICING & STORAGE :

- Clean the anchorage connector (parapet wall anchor) with mild soap detergent solution and rinse. The working parts may be sprayed sparingly with a moisture repelling agent. Excessive build-up of dirt, paint, etc. may prevent the anchorage connector from working properly.
- If you have any questions concerning the condition of your parapet wall anchor or have any doubt about putting it into service contact Safewaze immediately.

11. SPECIFICATIONS :

Material: Zinc Plated Steel
Minimum Breaking Strength: 5000 lbs. (25 kN)
Maximum Capacity: 310 lbs. (141 kg) (one person)
Weight: 20 lbs. (9 kg±100 gm)