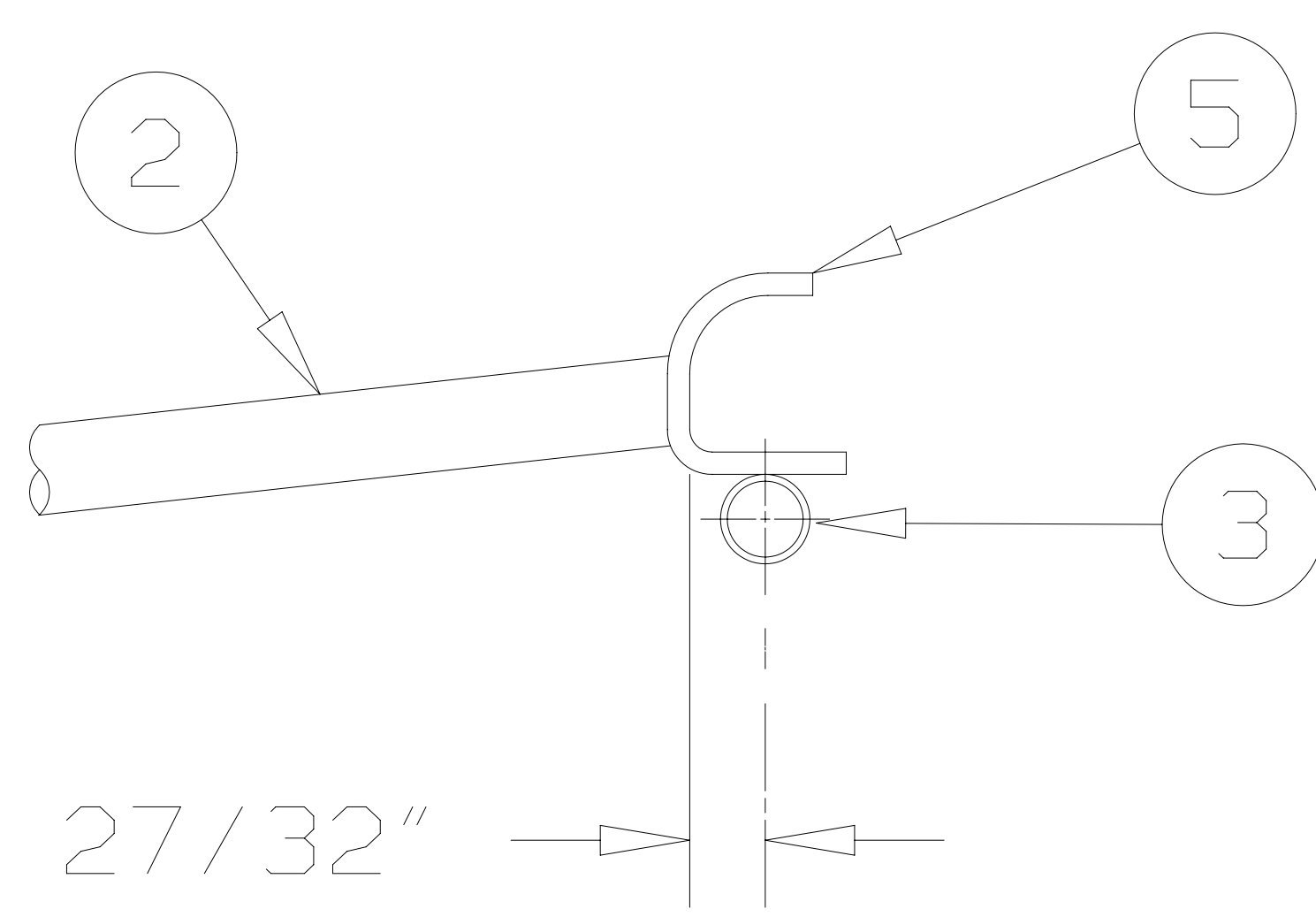
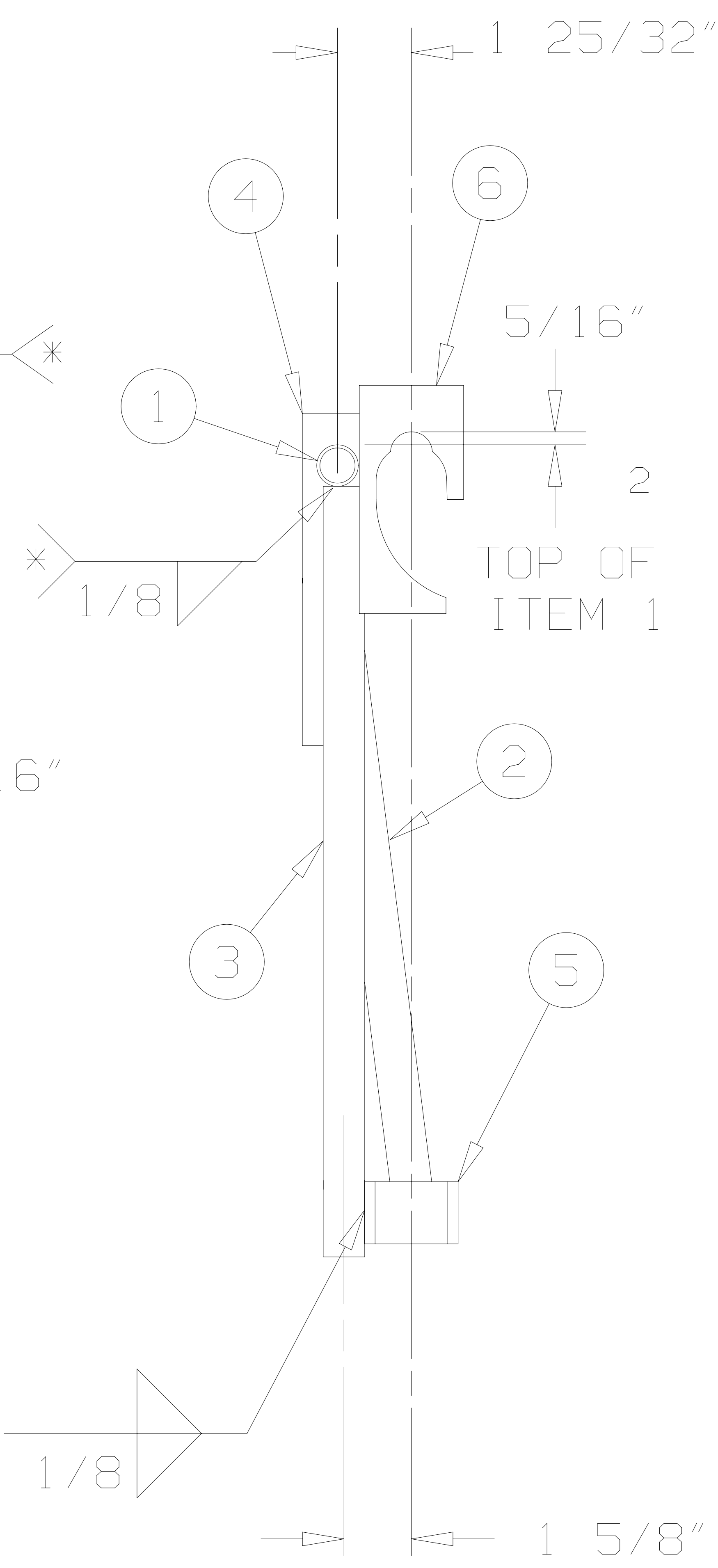


* NOTE! WELD MUST BE A CONTINUOUS 5 1/4" WELD, NOT SEPARATE WELDS



SECTION "A" - "A"

FINISH: SPEC NO. F-002

WELD: SPEC NO. W-001

NO	QTY	DESCRIPTION	FAB	PART NUMBER
6	1	FLAT-FMD-1/4 X 5-1/2"		0064-0850
5	1	FLAT-FMD-1/4 X 1-1/2"		0064-0849
4	1	TUBE-RND-1.690 X .095 X 8		0065-0771
3	1	TUBE-RND-1.000 X .076 X 18.5625		0065-0784-03
2	1	TUBE-RND-1.000 X .076 X 25.250		0065-0781
1	1	TUBE-RND-1.000 X .076 X 22.375		0065-0756

REVISION	DATE	BY	DESCRIPTION

SCALE 1/4" = 1"
 REV BY
 FINISH POWDER BLACK
 UNLESS OTHERWISE SPECIFIED THE FOLLOWING APPLY:
 *DIMENSIONS ARE IN INCHES.
 *FRACTION TOLERANCE=±1/32
 *XX DECIMAL TOLERANCE=±.01
 *XXX DECIMAL TOLERANCE=±.005
 *ANGLE TOLERANCE=±1/2°
 *ALL WELDS ARE TO BE CONTINUOUS 3/16" FILLETS.
 *ALL WELD FILLETS ARE TO COMPLETELY FOLLOW THE JOINT PREPARED BY THE MATING SURFACES OF PARTS JOINED.

20" SIDE BRACKET
 OFFSET-45° - 1.690 SOCKET

DWG NO 0039-820-745BK DATE 8/9/2018 DR BY MEW

BIL-JAX Archbold, Ohio 43502 Copyright © 2006

This drawing is the property of BIL-JAX INC., Archbold, Ohio. This equipment was designed with the understanding that the prints are not to be reproduced, copied, or used to assist in making further apparatus or parts thereof, and is to be returned unless otherwise specified.